

**BESTECH**  
**SQUARE**  
Residential • Shopping Mall • Business Towers • Hotel

WHEN YOU  
DESERVE THE  
BEST IN LIFE !

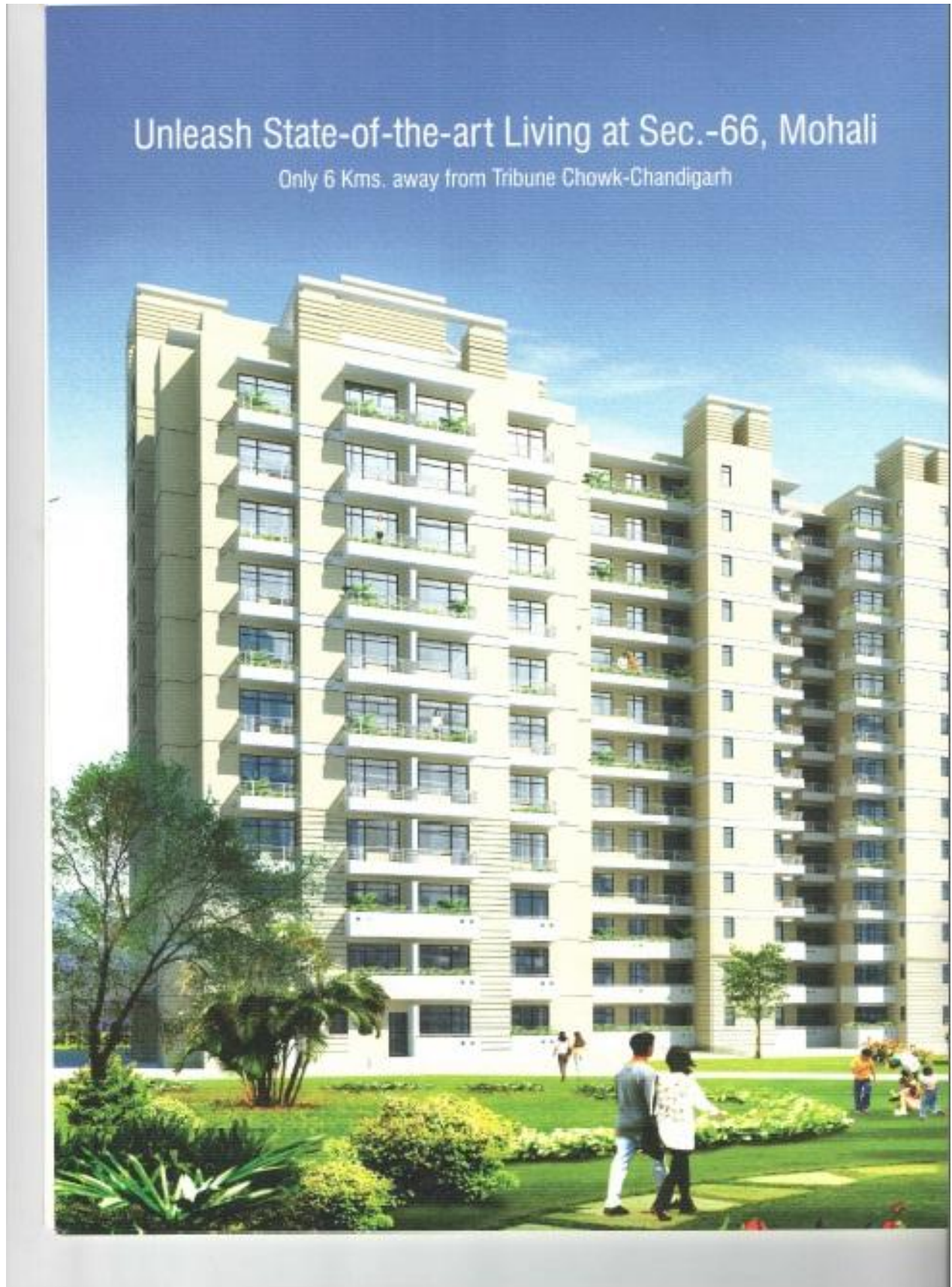
The Luxuries are at the  
Doorstep of Chandigarh

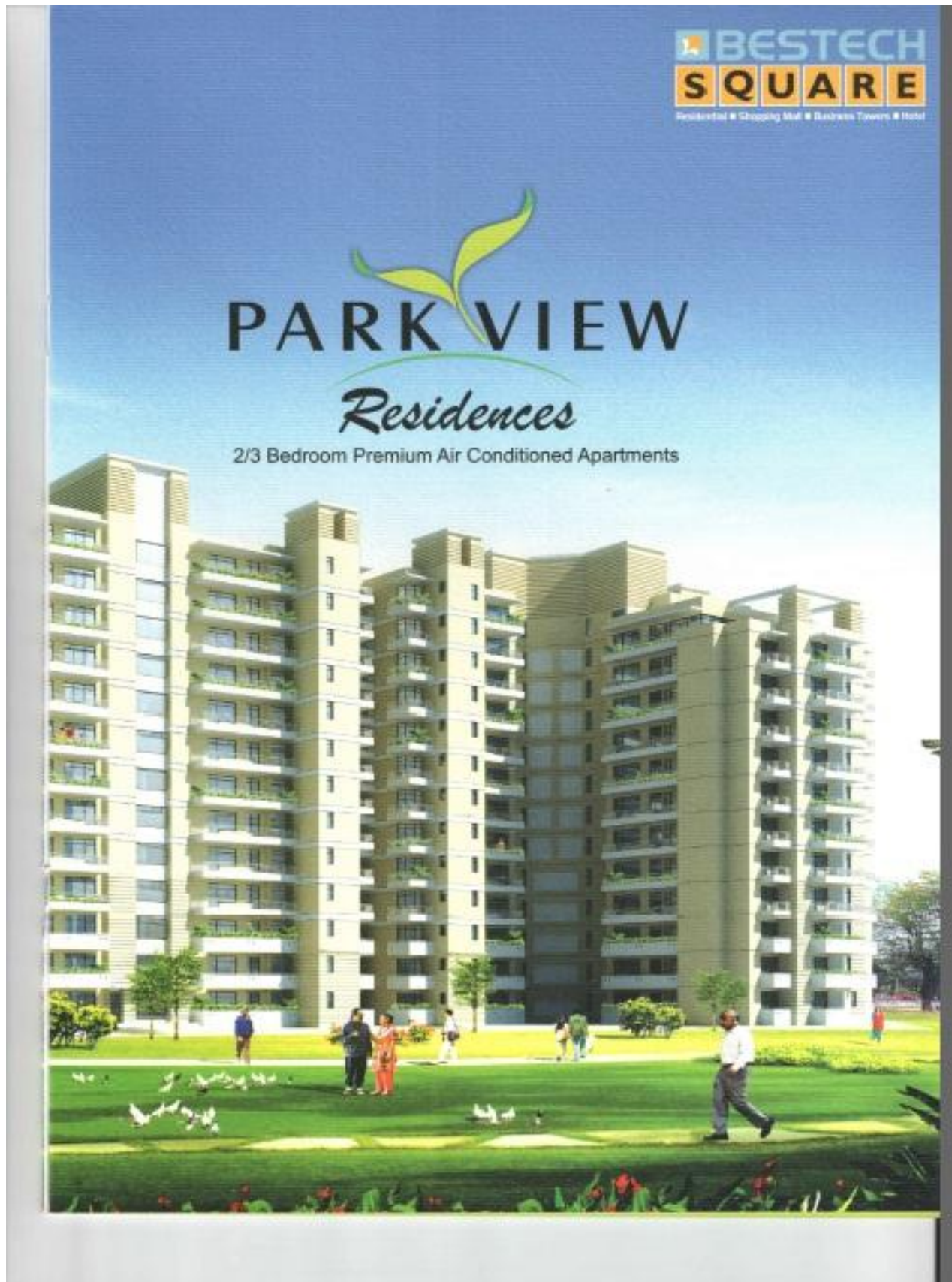
**PARK VIEW**

*Residences*

2/3 Bedroom Premium Air Conditioned Apartments

**SECTOR-66, MOHALI**







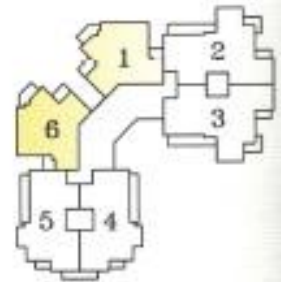
# PARK VIEW

*Residences*  
2/3 Bedroom Premium Air Conditioned Apartments

2 BEDROOM + 2 TOILET  
(SUPER AREA = 1395 Sq.Ft.)

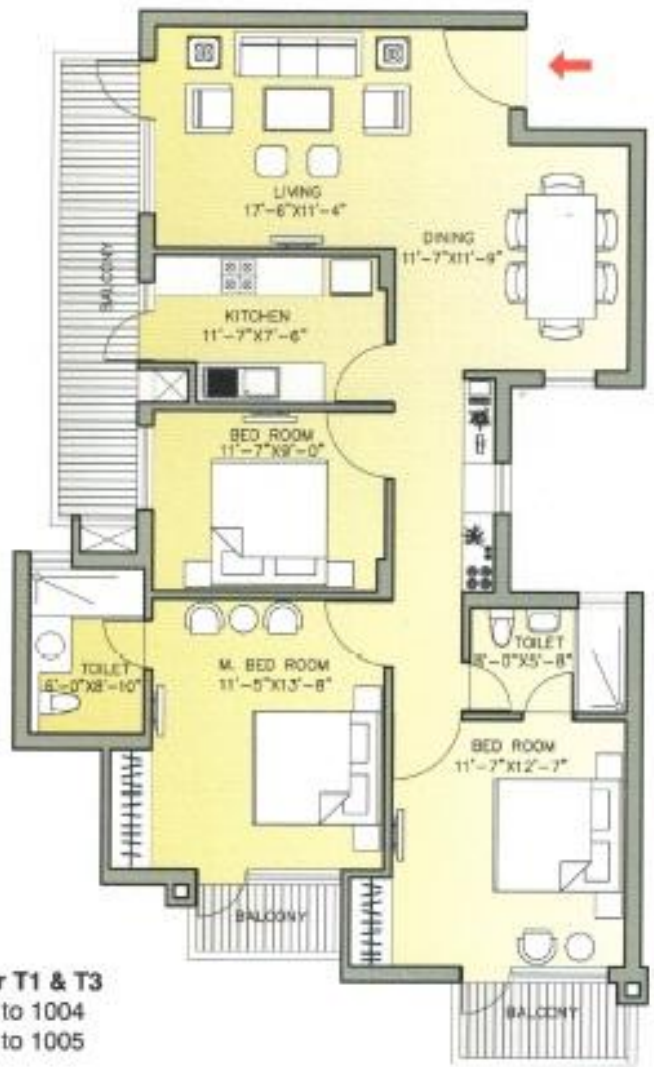


**Tower T1 & T3**  
201 to 1001  
206 to 1006

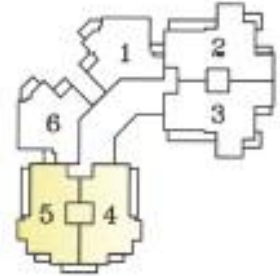




3 BEDROOM + 2 TOILET  
(SUPER AREA = 1560 Sq.Ft.)



Tower T1 & T3  
004 to 1004  
105 to 1005

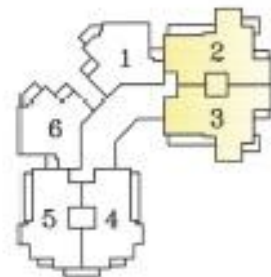


**PARK VIEW**  
*Residences*  
2/3 Bedroom Premium Air Conditioned Apartments

**3 BEDROOM + 3 TOILET**  
(SUPER AREA = 1830 Sq.Ft.)



**Tower T1 & T3**  
102 to 1002  
003 to 1003

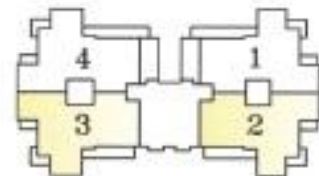




3 BEDROOM + 3 TOILET  
(SUPER AREA = 1855 Sq.Ft.)



**Tower T2**  
101  
104  
002 to 1002  
003 to 1003



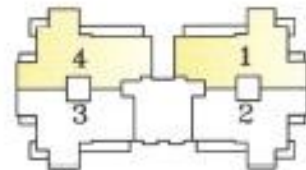
# PARK VIEW Residences

2/3 Bedroom Premium Air Conditioned Apartments

3 BEDROOM + 3 TOILET + SER.  
(SUPER AREA = 2025 Sq.Ft.)



**Tower T2**  
201 to 1001  
204 to 1004





## SPECIFICATIONS

LOCATION	WALLS	FLOORS	DOORS	WINDOWS/ GLAZING	OTHERS
<b>LIVING ROOM</b>	Acrylic Emulsion Paint	Imported Marble Flooring	Hardwood door frame with European style flush panel	Anodized / Powder Coated Aluminum	<b>Air Conditioner in Living Room</b>
<b>BEDROOM</b>	Oil Bound Distemper	Wooden Flooring in all Bedrooms	Hardwood door frame with European style flush panel	Anodized / Powder Coated Aluminum	<b>All Bedrooms with Air Conditioner</b>
<b>KITCHEN</b>	2' high Ceramic Tiles above counter, rest painted	Ceramic Tiles	Hardwood door frame with European style flush panel	Anodized / Powder Coated Aluminum	Granite counters with Stainless Steel sink <b>Modular Kitchen with Hob &amp; Chimney</b>
<b>TOILETS</b>	Ceramic Tiles & Oil Bound Distemper	Ceramic Tiles	Hardwood door frame with European style flush panel	Anodized / Powder Coated Aluminum	Granite/Marble counters, Single lever CP fittings, <b>Grohe/ Kohler</b> or Equivalent, Wall hung WC
<b>BALCONIES</b>	External Grade Paint	Anti Skid Ceramic Tiles			
<b>LIFT LOBBIES</b>		Granite / Imp. or Indian marble			<b>Air Conditioned Ground Floor Lobby</b>
<b>EXTERNAL FACADE</b>	Permanent Texture / Paint Finishes				

### FEATURES

- 2/3 Bedroom Spacious Apartments
- Dramatic Landscaping • Power Back-up
- 20 Minutes Drive from the Airport
- Round-the-clock Security • Earthquake Resistant Structure • High Speed Lifts
- 2-Tier Underground Car Parking
- Premium Club Membership\* in Bestech Square Complex



